



*Eulogiusstr. 8*  
*88634 Herdwangen-Schönach*

*Hagalis AG \* Eulogiusstr. 8 \* 88634 Herdwangen-Schönach*

Symbioceuticals Harmonizer GmbH  
Jürgen Lueger  
Gangsteig 2  
A-5082 Grödig

06/15/2016

## **Cristal analysis**

### **Evaluation of Water quality:**

Evaluated samples:

Symbioceuticals Harmonizer GmbH, water sample: Harmonizer Card

Within a trade-off study, with which altogether 2 samples were taken, of which 2 came here to the comparative analysis, the crystallization were examined, which was won from the liquid phase and the fixed phase of the samples.

The crystals develop thereby from the extraction of the distillate arrears, which were calcinated

before. These crystalline salts are combined with the distillate and applied on slides. The liquid is

brought at ambient temperature to the evaporation. Typically assigned crystal pictures, which

permit a predicate about the quality of the samples, develop for the samples.

Production of the Kristallisates in the overview:

1. Distillation of the sample without additions of water or other solvents at low temperatures.
2. Production of the crystalline salts from the distillate arrears by calcination
3. Union of distillate and crystal-salts and following applying on slides.

- emergence of the typical, the samples of appropriate crystal pictures -

The crystal pictures are at any time reproducible from the same sample and always show those the samples of typically appropriate crystal pictures.



## Symbioceuticals Harmonizer GmbH, Water sample: Harmonizer Card

In this evaluation the samples of the neutral tap water of Bottighofen (control) and the tap water of Bottighofen neutral treated with the Harmonizer Card of the Company Symbioceuticals Harmonizer GmbH were faced and their quality compared.

All Samples were subjected to exactly the same conditions, so that extraneous influences were largely excluded. The sample evaluated here is the treated sample Harmonizer Card of the Company Symbioceuticals Harmonizer GmbH.

While crystals of the control were highly condensed, here they show a high surface formation and a better spread over the entire image. In the control occurred very many structures of 90° angles, which aren't found here. This means that the pollutant information could be neutralized. Here are found primarily 60° angle structures. This means that a convergence has taken place to a natural source water quality.

The surface formation of the crystals has increased dramatically compared to the control, suggesting a good increase in the bioavailability of the minerals in the sample. The sample is better suited as viands for the supply with trace elements and minerals than the control. At the same time the level of the vital forces has increased retainable.

The energy balance is higher than in the control and is overall evaluated as positive. A clear energy surplus exists in this sample. The human metabolism is stimulated positively by the high bioavailability of trace elements and supported by the excess of energy. In this respect the biological valence of this sample is to be evaluated here as a high quality.

Here are shown hardly condensed zones, which would indicate a tendency of sedimentation of Calcium or other minerals, as it was seen in the control. Therefore the technical water quality in this sample has improved. Cross-shaped, condensed angular structures do not occur throughout the image, so that it can be assumed, that the solubility of minerals in the water increased significantly. Larger crystals – not found here - could precipitate and clog water pipes.

Here the occurring small crystals have a higher surface formation and are less prone to precipitation. This means that technical devices can be operated well with this water quality. The technical water quality has increased dramatically, and the danger of calcification has been reduced to a minimum. This is a significant benefit for consumers in terms of maintenance and durability of the equipment used by him.

The sample shows a total harmonic crystal structure, which refers to a high-quality natural water. The angular structure approaches clearly to 60° angles and is even partly settled among them. Primarily star like crystals were formed, as they are only found in well water samples of high quality. The bioavailability of the

minerals is so good, that the water also can make a meaningful contribution to viands and supply people with vital trace elements. The sample is to be settled overall in the top field of the grading scale and shows a natural quality that is usually only found in natural well water.

Regarding possible healing effects or supporting effects on organs, the following indications occur:

The treated water with the Harmonizer Card has a positive effect on the organ zones kidney and liver. With regard to the kidney appears a better ability of the sample treated with the Harmonizer Card to bind toxins and to support the ability of excretion of the organ than in the control. It should be observed whether test subjects excrete faster and better, if they drink Harmonizer Card treated water.

With respect to the liver can also be found, that the function of detoxification is better supported by the treated sample, as it was the case in the control.

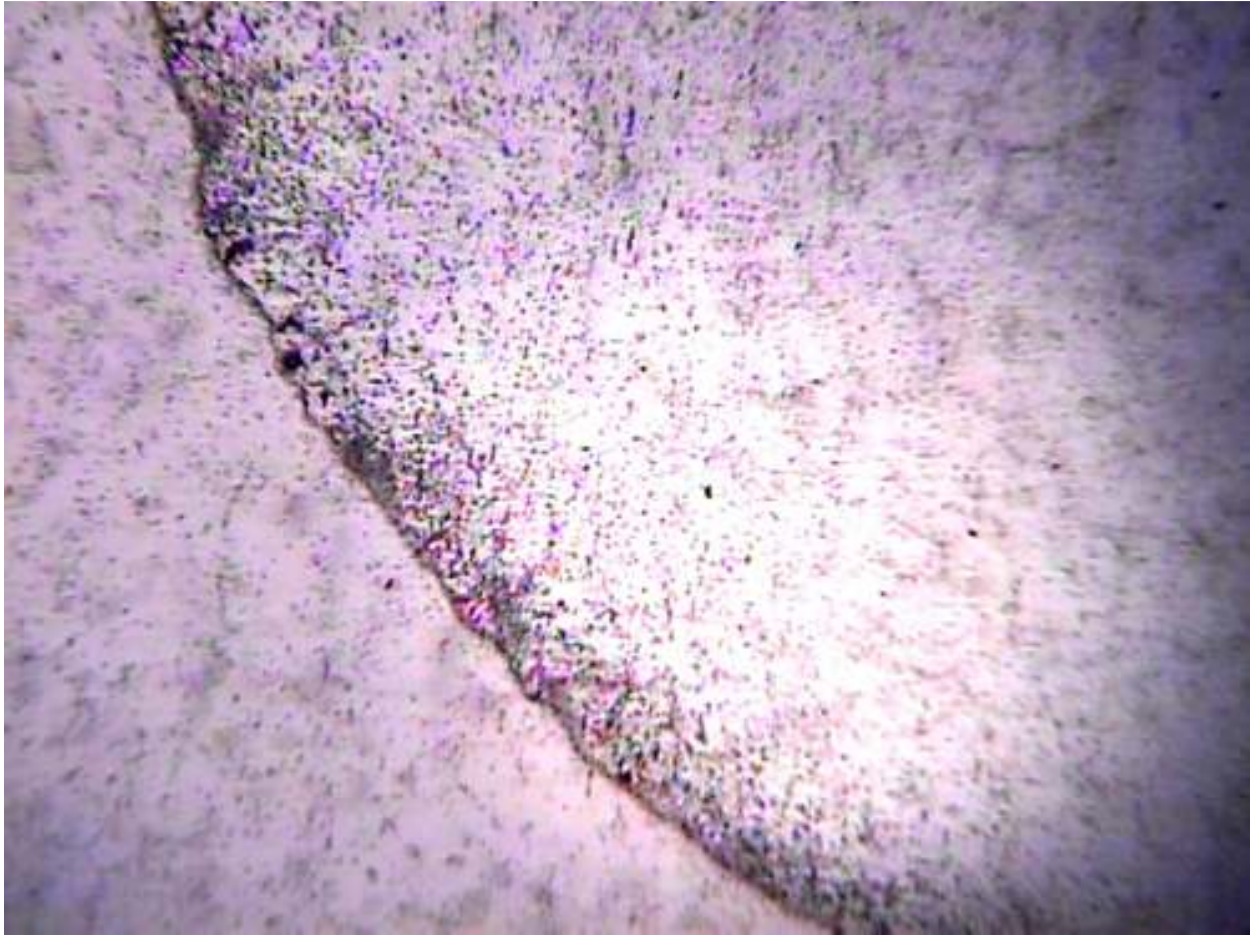
To support the healing effects scientifically, subject tests should be carried out.

Further details are described with the images.

# 1. Entire Picture

Magnified 40 times

Sample: Symbioceuticals Harmonizer GmbH, Water sample: Harmonizer Card

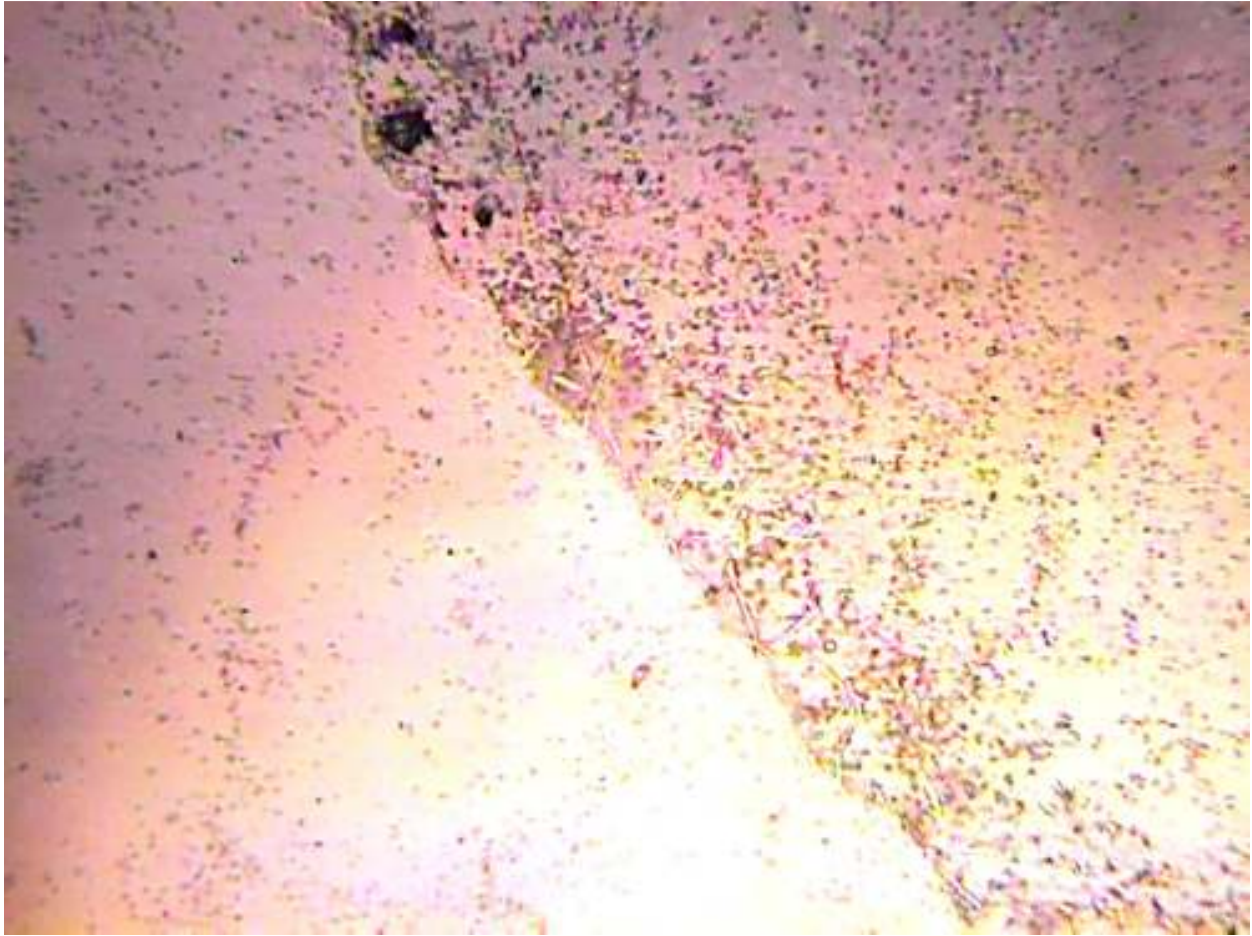


In the entire picture occur very clearly changed crystal structures comparing to the control.  $90^\circ$  angle structures that have pointed to pollutant information have decreased significantly. Much less condensed crystal structures occur, indicating that the technical water quality was affected positively. However, the changes in the angle structures of crystals indicate a strong quality-improving effect in a biological sense. Simultaneously no crystal-free zones occur, so that it can be assumed, that after the treatment with the device Harmonizer Card from the Company Symbioceuticals Harmonizer GmbH a high energy density is present in the sample. Such structures are usually an expression of a high vital natural spring water. The degeneration of the water through mistreatment, as it is often perceived in tap water, does not occur here.

## 2. Half Picture

Magnified 100 times

Sample: Symbioceuticals Harmonizer GmbH, Water sample: Harmonizer Card



In the half picture finely feathered crystals occur again much more clearly. The morphogenesis is star-shaped, which can be observed only in natural spring water. Such shaped formations occur only, if the energy potential has reached a high level and the sample contains many vital forces. The angle configurations approaching to the  $60^\circ$  angle and partly also lower, suggesting as a high-quality natural water quality. The angle configurations don't show low mineralized water, that wash out minerals from the body, but the wide range of good bioavailable minerals is available to the full extent.

### 3. Enlargement

Magnified 400 times

Sample: Symbioceuticals Harmonizer GmbH, Water sample: Harmonizer Card

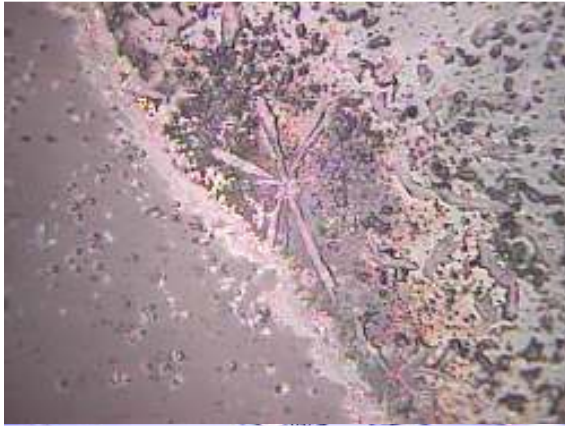


In the enlargement picture shows a well-formed star-shaped crystal structure with almost exact  $60^\circ$  angles. It guarantees a high quality of drinking water, which is suitable as viands for the supply of minerals and trace elements. Such crystal structures were not seen in the control, so that this is due to the effectiveness of the device Harmonizer Card. The high surface formation indicates a good solubility of the minerals that improved the technical water quality. The principal effect is mainly to improve the biological quality of water and the appreciation of minerals regarding to their bioavailability.

## Summary:

Sample: Symbioceuticals Harmonizer GmbH, Water sample: Harmonizer Card

### Picture Comparison with the Control:



Sample: Harmonizer Card, magnified 400 times



Sample: Control sample Bottighofen, magnified 400 times

This sample is a high-quality natural water, that revives the consumer due to his positive energy balance. No bad influence of harmful information or contaminants are to be expected, so that it is a very good quality of drinking water for everyday use. In this case, the method Harmonizer Card of the Company Symbioceuticals Harmonizer GmbH seems to have very positive effect and have brought the water closer to a original natural quality. The control of the Commune Bottighofen could be significantly improved by the use of this method. This is a clear benefit for the consumer.

If one should wish more detail of its medicinal effect, then tests using the blood crystallization would need to be done, as those details are unfortunately not given within the limits of this test.

We have evaluated the device at 2.0 and good and declare hereby a good recommended drinking water quality.

Herdwangen, June 15, 2016

A. Schulz  
(Head of Research)